

bürotime



asset for success.

bürotime

Bürotime; realizing its innovative products by considering the human, environment and design elements, ensures the satisfaction of its customers by providing products and services of universal quality and standards that reinforce the sustainability understanding with its employees, solution partners and concept stores.

Leading manufacturer focuses on **innovation** and **R & D** concepts in all applications carried out in production processes. In order to reach the goal of becoming a global brand, aims to have a say in both **domestic and foreign markets with its award-winning designs** that direct the sector.

Touching all contact points of the design allows a more complete and better brand experience of the relevant product or service for the user. The physical design originality created with aesthetic concerns for all kinds of products and product groups that make life easier has a place in every field of production. The visual and functional objects that can be designed aren't produced by "reproduction", but by the way of "**new production**". The designs in which technological innovations are applied not only raise the standard of living of individuals; at the same time, it transforms ideas like durable and aesthetic product perception into reality. Physical design meets a need for the user from a functional point of view; but the original design details make it indispensable and preferable for the user.

As Bürotime, we build the perfect harmony in our products on creating a balanced visual language and value by blending the functional and aesthetic elements that will keep it alive with contrast varieties. In our opinion, the state of equilibrium within the design is achieved by ensuring even distribution of the parts in order to indicate their stability as a whole.

Original products developed to meet the needs of people in the office play a role beyond traditional design. With different designs for the service and the sector to be used, the perspective of the service changes and a people-oriented understanding is obtained.

We believe that changing "office and living spaces" concepts will always exist in a corner of human life, even though they evolve in the direction of future trends and smart technologies, and we have the feeling that values such as **mutual communication and sharing** can be felt more effectively together. What is important for us is the reflection of our products and services as an added value to humanity and environment.

7

desks

Theo 10 - 13 / Armada 14 - 17 / Eternity 18 - 21 / Lead 22 - 25 / Core 26- 29 / Maki 30 - 31 / Note 32 - 43 / Grid 44 - 47 / Era 48 - 55 / Cross 56 - 59 / Bistrodern 60 - 61 / Levels 62 - 65 / Stripe 66 - 73 / Opera 74 - 79 / Puzzle 80 - 93 / Set 94 - 95 / Runner 96 - 101 / Handy 102 - 107 / Fishbone 108 - 114

115

chairs

On Chair 118 - 119 / Ronin 120 - 121 / Foldit 122 - 123 / Magnate 124 - 125 / Word 126 - 127 / Capo 128 - 129 / Agent 130 - 131 / Tone 132 - 133 / Rare 134 - 135 / Swan 136 - 137 / Assist 138 - 139 / Bold 140 - 141 / Cozy 142 - 143 / Comfy 144 - 145 / Gusto 146 - 147 / Poly 148 - 149 / Point 150 - 151 / Crab 152 - 153 / Revolution 154 - 155 / Quick 156 - 157 / Fast 158 - 160

161

sofas & armchairs

Boss 164 - 165 / Neva 166 - 167 / Stay 168 - 169 / Diamond 170 - 171 / Gilda 172 - 173 / Rast 174 - 175 / Hills 176 - 177 / Keops 178 - 179 / Piet 180 - 181 / Dem 182 - 183 / Throne 184 - 187 / Nest 188 - 189 / Bliss 190 - 191 / Onyx 192 - 193 / Fusion 194 - 195 / Foça 196 - 198 /

199

common areas

Beluga 202 - 203 / Sam 204 - 205 / Dem Saloon 206 - 207 / Keops Divan 208 - 209 / Hexa 210 - 211 / Zoom 212 - 213 / Flat 214 - 217 / Port 218 - 219 / Pick 220 - 221 / Nar 222 - 223 / Zoom Tabure 224 - 225 / Quick Tabure 226 - 227 / Fast Tabure 228 - 229 / Arte 230 - 231 / Bug 232 - 233 / Neat 234 - 235 / Bliss 236 - 237 / Norm 238 - 239 / Usb 240 - 243 / Stack 244 - 247 / Holm 248 - 251 / Pal 252 - 255 / Octopus 256 - 257 / Bamboo 258 - 259 / Flower 260 - 261 / Zoom Askılık 262 - 263 / Focus 264 - 267

268

home office

Pi Home 270 - 273 / T50 274 - 277 / Era Home 278 - 281 / Runner Home 282 - 285

| Desks



Theo



Armada



Eternity



Lead



Stripe Executive



Stripe Operational



Stripe Meeting



Opera Executive



Core



Maki



Note Executive



Note Meeting



Opera Meeting



Opera Operational



Puzzle Executive



Puzzle Operational



Note Operational



Grid



Era Executive



Era Operational



Puzzle Meeting



Puzzle High



Set



Runner



Era Meeting



Cross



Bistrodern



Levels



Handy



Fishbone

Theo

“Products that put users first.

The offices of the executives are defined by meticulous order and reflection of their owners with sophisticated style. De Stijl art movement inspired Theo. This design embraces the essential geometric forms and simple lines, and utilizes the concept of ‘harmony and order’. We materialized the intellectual profundity in the perfect lucidity of the clear forms and created autopia of harmony.”

Ece Yalın - Oğuz Yalın

10



11





| Armada

14



"A series that focuses on the infrastructure of success.

Success at work is formed by many elements. 'Power' is at the top of these elements. Perception of the power is best expressed through a good story, where the office of the executive is the stage where story takes its place."

Murat Erciyas

15





Eternity

18



“Power, glory, trust.

Throughout human history, in most forms of government, castles have been built on high cliffs. This approach for security purposes also allowed the ability to view and control the city from above. Today, in the buildings known as cliff houses; With the need to create more special and high-level living spaces, we see an architecture that extends forward or upward on a foundation placed on rocks. In the light of this architectural information, we can overlap the words such as “power, grandeur, trust” represented by these structures with the concepts of “infinity without borders” at the same time. In today’s business life, “Infinity Concept” has been emphasized in order to express the position in the best way in the senior executive group furniture work to meet the needs of senior managers of companies.”

Fatih Aslantaş

19





Lead

22

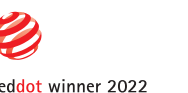


“Nowadays, as a result of changing population in the offices and the evolution of the contemporary work, roles are less rigid and hierarchical, with greater emphasis placed on horizontal relationships in the offices.

Based on these approaches, Lead executive series was designed as a response to the fluid and dynamic nature of contemporary work environments. Its design goes beyond the idea of the traditional desk, communicating openness and dialog. The collection stands out for its carefully-designed structural details and skilled use of materials, all of which result in an unmistakable stylish signature.”

Duygu Aslanel

23





Core

26



“Core shines out with its design combining elegance with functionality, adding power and prestige to executive offices.

Asymmetrical composition created by a unique combination of surfaces enriched with various materials, diverges from monotone lines and exhibits a modern and elegant outlook. The product family where natural stone, leather, and wooden materials gain momentum with fine craftsmanship demonstrates the glory executive offices require while presenting to its user force it owes to nature.”

Murat Erciyas - bürotime tasarım ekibi

27





Maki

30



“For extraordinary executives.

Maki interprets form and function at its most iconic and contemporary senses. Angular legs challenge the realities of statics and at the same time with their unique silhouettes offer an artistic approach to office furniture. Both stories are written for executives who aim to reflect the power and continuity in the business world. With its inspiring simplicity and fine details Maki casts a lasting impression in modern office.”

Farm Design

31



Note Executive

32



“Clear details and simple design.

Besides providing flexible and functional working areas to the managers, different kind of needs and requirements of expressing themselves should be met by unique solutions. Productive and decisive manager’s strong ideas against the changing dynamics of office are reflected in the Note Table design.”

Utkan Kızıltuğ - Arif Akıllılar

33





Note

Meeting

36



37



“While demanding less space it stands out with its timeless elegance.”

Timeless designs share a common ground on the perception of beauty. Contribution they provide to an environment is not only functional but also distinctive by means of perpetuating unique identity for generations.”

Utkan Kızıltuğ - Arif Akıllılar





Note

Operational

40



Note Workstation family blends a simple design language with its strong stance, adding an aesthetic appearance and prestige to common work areas. The award-winning foot design supports employees ergonomically and cable detail solutions create tidy spaces. There are different combination options in the product family, from a two-person table to a six-person table. Thanks to the table top positioned at the head, it strengthens the interaction and communication in the working environment and raises productivity to the highest level. Intermediate panels with wide color and fabric alternatives not only add color to offices, but also protect acoustics by creating personal work areas.”

Utkan Kızıltuğ - Arif Akıllılar

41





Grid

44



“Simple design, prestigious position.

Grid is designed for middle and senior executive offices; a collection that reflects the architectural integrity of the period. Contrary to its slender and simple lines, it carries the power and prestige it has. The large work surface, the electrification solutions on both sides and the functionality provided by the storage areas, fulfill all expectations of the user.”

Erdem Keskin



45



Era

Executive

48



“It allows unique usage scenarios with its simple design based on functionality.

Era aims to re-live the sincerity and warmth of the past in every working environment with each member of the product family. The meeting of the natural wood used in the legs with the details of the metal-formed combinations describes the existence of both periods in harmony with each other while presents these two periods before and after the technology in a humble manner. Every unit in the Era product family is designed to appeal to the needs and pleasures of a person with a particular variability.”

Utkan Kızıltuğ - Arif Akıllılar

49





Era

Operational



52

“Common story of wood and technology.

Era blends and presents modestly past time's warmth with technology and also helps you to create pleasant and productive work space through functionality at the center of design conception.”

b.design team



53

Era

Meeting

54



55

Cross

56



“Plain and geometric structure and long - term use.

New approach in design enables us to make innovative products as well as reaching out to new audiences. We wanted Cross to be a simple, yet a different product. The basic geometry of its design makes it a timeless product that suits every space easily. We designed Cross by considering all these factors, so it is a timeless design to be used many years.”

Süha Sözen

57





Bistrodern

60



“Bistrodern focuses on the effects of the correct forms over employees.

Bistrodern embodies the modern lines of the past and future. Success in the corporate world comes from the combination of the many important aspects of the human life. The tangible forms of these desired aspects turn into real objects in indoor spaces where we spend most of our time and start to communicate with us. The subtle state of delight manifests itself when encountered with the correct objects, correct forms and correct positioning and leads our lives harmoniously with course of correct actions.”

Utkan Kızıltuğ - Arif Akıllılar

61



Levels

62



“Perfectly blending wood with leather, Levels allows managers to easily focus on the meeting.

Levels provides a comfortable and convenient work environment for the strong leaders and managers focusing around a topic, opinion or presentation. The relationship between the components visually and functionally provides diversity in the product to meet different dimensions and needs. The combination of wood and metal sheet legs allows the combination of the naturalness of wood and leather material in different color alternatives. Measure differences in foot and in the pieces used in table top create a natural balance among themselves. The level differences between surfaces refer to the “Levels concept” which is set as the starting point in the design of the product.”

Arif Akıllılar



63



Stripe Executive



66

“Stripe, elegant but dominant executive desk.

Every detail in Stripe’s design highlights the privileged status of executive. The concord of executive desk, operational tables and conference table perfectly agrees in the same office. Executives who want to craft the perfect fit would choose Stripe for their work space.”

Murat Erciyas



Stripe Arc Executive



67

Stripe

Operational

68



“The ultimate flexibility of Stripe wins over the space limitations.

Stripe takes place amongst most recent furniture series of Bürotime; it is an outcome of completely innovative approach. When I designed the operational series of Stripe, I imagined an inventive office featuring the clear hierarchy of executives and introducing the power parity approach to the team. The Stripe operational series provide permeable, transparent workspaces for everyone.”

Murat Erciyas

69



Stripe Arc Operational

70



71



Stripe Meeting

72



“Stripe shapes itself according to the changing needs of the user.

Just like the other products of the series, Stripe conference table has many features that make your work easier. When I designed Stripe, I took into consideration both changing needs of the user and variety of space layouts. The meeting unit is adjustable and can be built in different sizes.”

Murat Erciyas

Stripe Arc Meeting

73



Opera Exclusive

74



“The Opera executive desk, designed to meet the business requirements of managers and support team spirit, creates a functional and holistic look within the office. Outlets that can be integrated into the top of the desks or storage units allow for the easy use and charging of electronic devices, enabling a more efficient use of active areas.”

b.design team



75

Opera Meeting

76



“Meeting units integrated alongside Opera workstations encourage effective collaboration and creative thinking among employees, facilitating the emergence of new ideas and solutions.

Opera meeting tables come in various forms such as triangle, circular, square, and rectangular, offering numerous options suitable for the number of participants and the environment they will be used in. With color choices and electrification solutions, Opera meeting tables contribute to the success of collaborative work.”

b.design team



77

Opera Operational

78



Designed to create dynamic and efficient workspaces, the Opera product family transforms the office environment into the stage for successful teams. With its modular structure and product variety, Opera provides freedom of choice, allowing for unlimited combinations to be created based on needs and facilitating the reshaping of your workspace to optimize workflow.”

b.design team

79



Puzzle

Exclusive

80



“It’s simple line brings a calm atmosphere to executive rooms.

Puzzle is designed to meet today’s trends to meet the needs of managers who value functionality and concentration.”

b.design team

81





Puzzle

Operational

84



“Puzzle gives you the chance to create your private space in heavily populated offices.

Puzzle is designed to meet all the needs of the office with its unique and multi-work areas, as well as the tray options with different forms.”

b.design team

85





Puzzle Meeting



“Brings serenity to your meetings with its functional and harmonious design.

Puzzle, offers functional solutions to different meeting habits of modern offices with its renew design.”

b.design team



Puzzle High

“Puzzle High, which allows communication at eye level by standing or sitting, provides mobility in the office as it encourages standing.

Puzzle High; allows the organization of areas for meeting and sharing ideas that bring interaction to the forefront by changing the monotonous working conditions of the users. It promotes collaboration and productivity. It offers a holistic solution to the new generation working needs with its accessories which enable the integration of units such as TV, storage units and with the dimensions and module varieties. It is an ideal option for individual work as well as teamwork and meetings. It creates the feeling of a separate space by isolating the meeting environment from the open office space in terms of sound and image.”

Duygu Aslanel





Set

“Mobility in office life.

Set distinguishes itself with its design approach centering the concept of healthy offices. Elegant design equipped with high technology allows people stay active in their daily office life, and its height adjustable telescopic legs enable people either sit or stand while working or change positions whenever they want.”

Utkan Kızıltuğ



Runner

96



“Runner gives you the possibility of creating endless number of sitting arrangements.

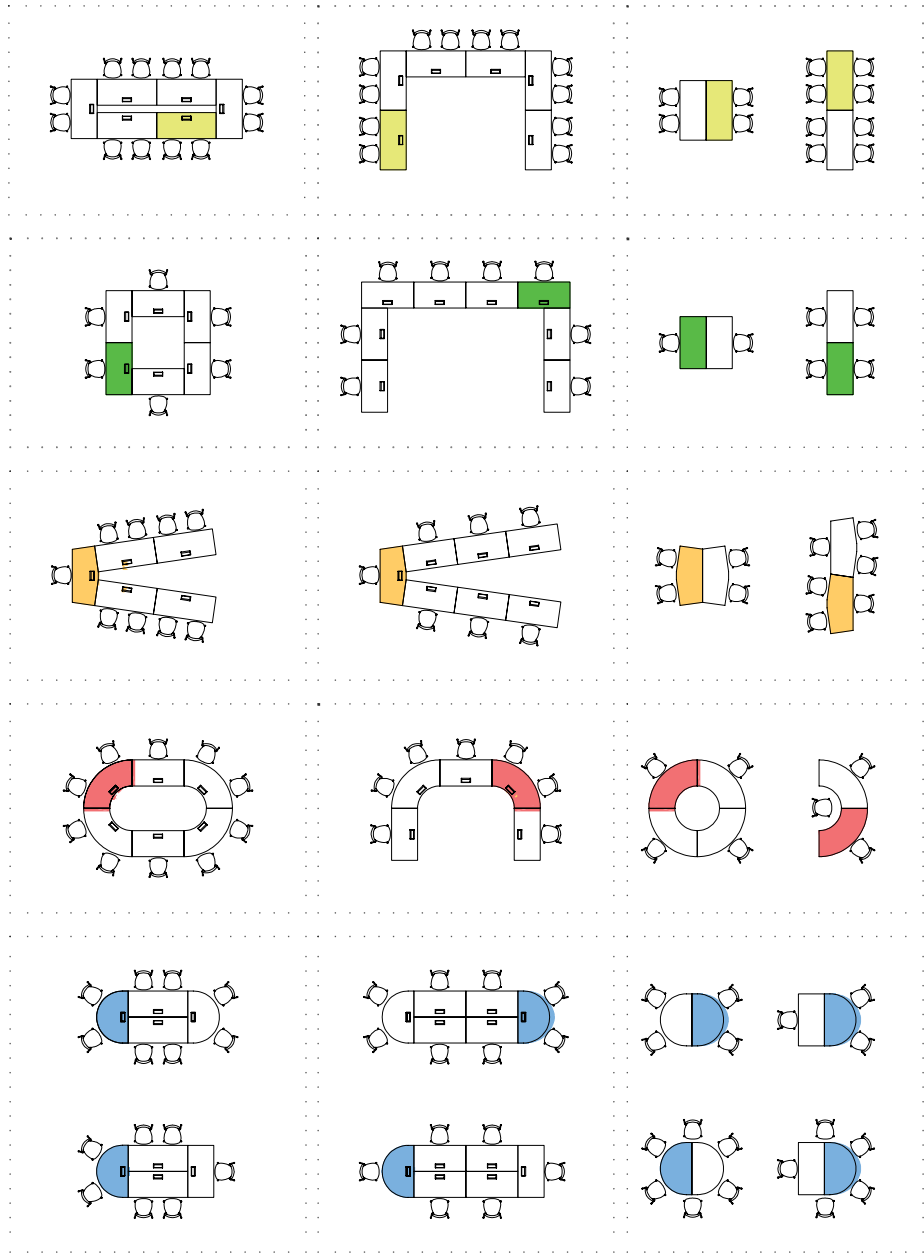
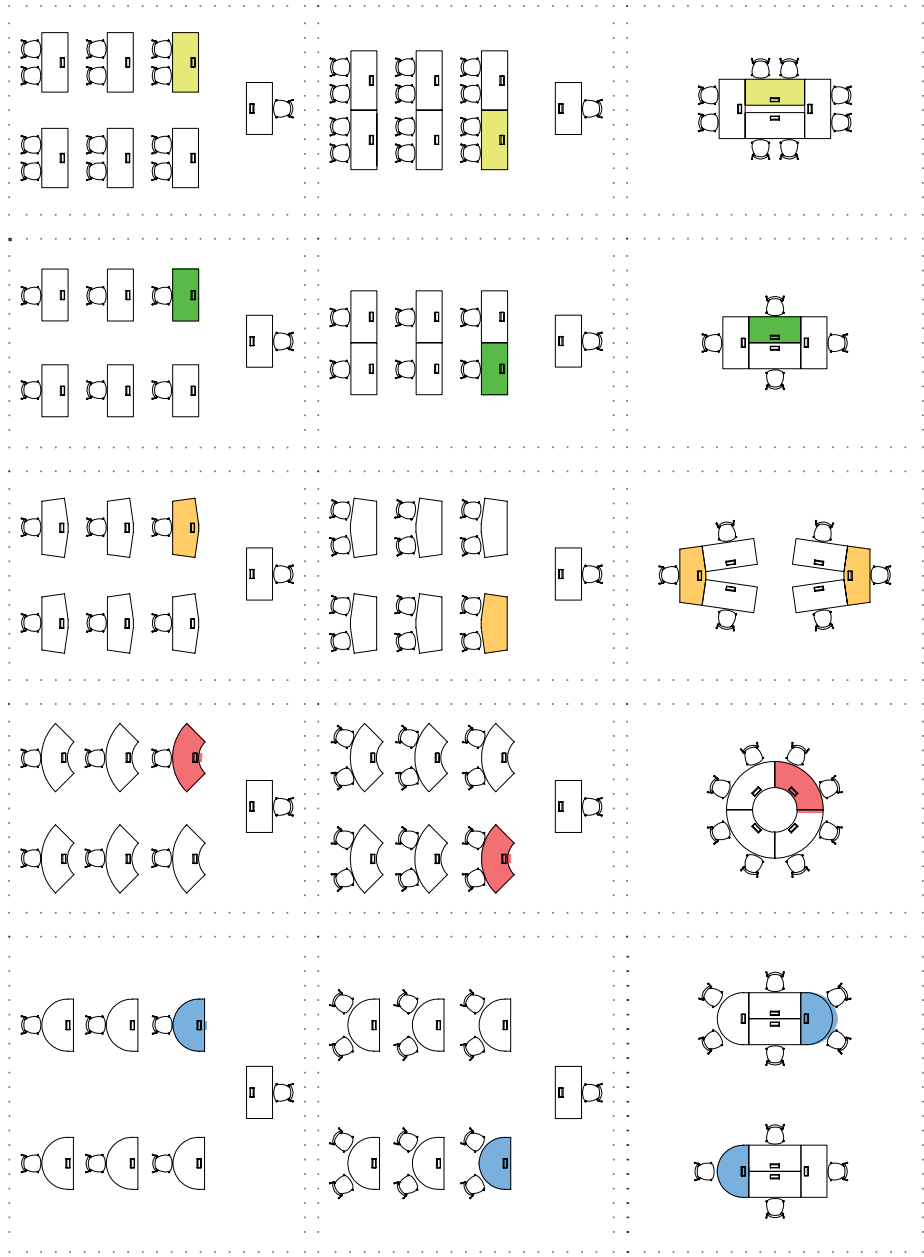
Alliance of powers is crucial in work environments. Today in all fields of activity and expertise, office teams acting in concord to build and implement the ideas, finding the strength in unity. It may take endless number of meetings to reach an agreement. Different agendas require different seating arrangements, Runner series designed to foresee these placement scenarios.”

Utkan Kızıltuğ - Arif Akıllılar

97







| Handy



102

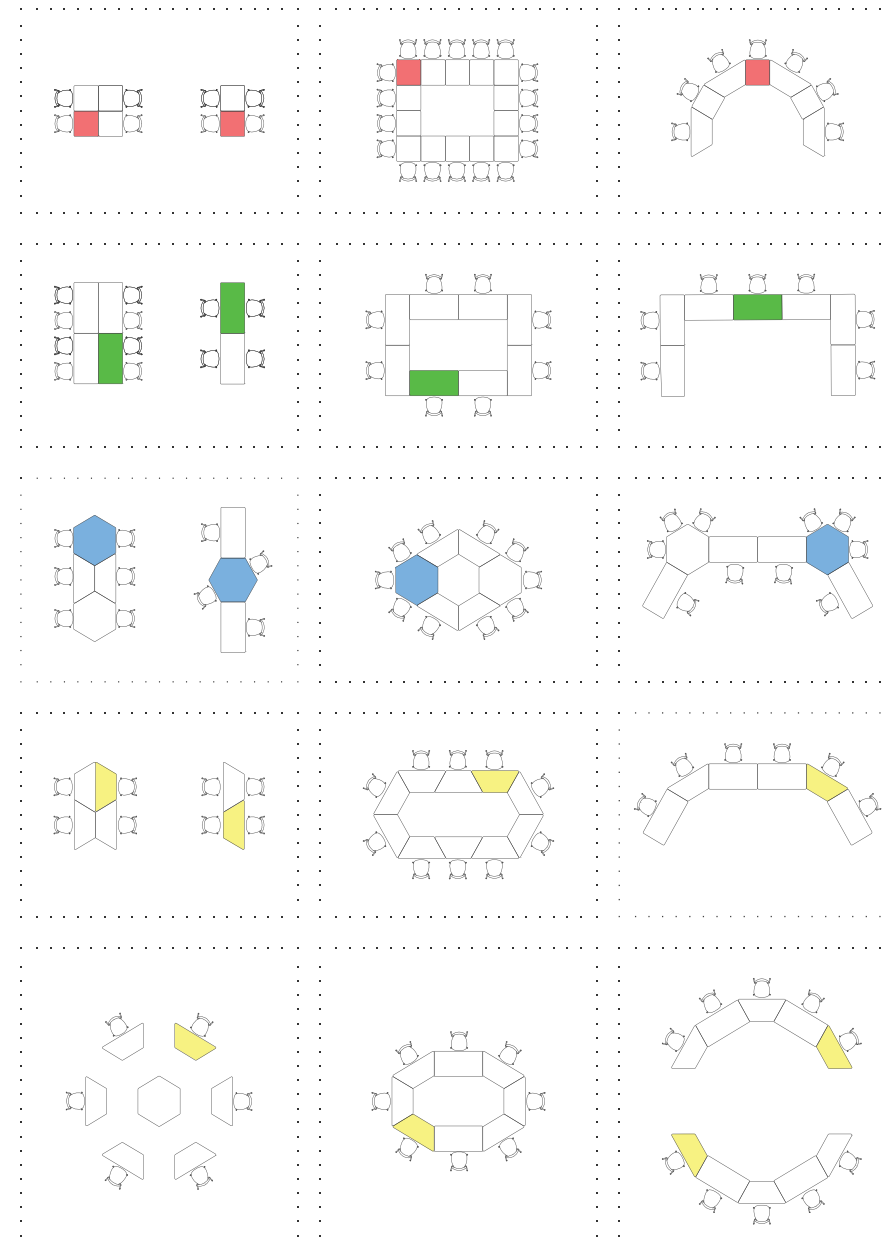
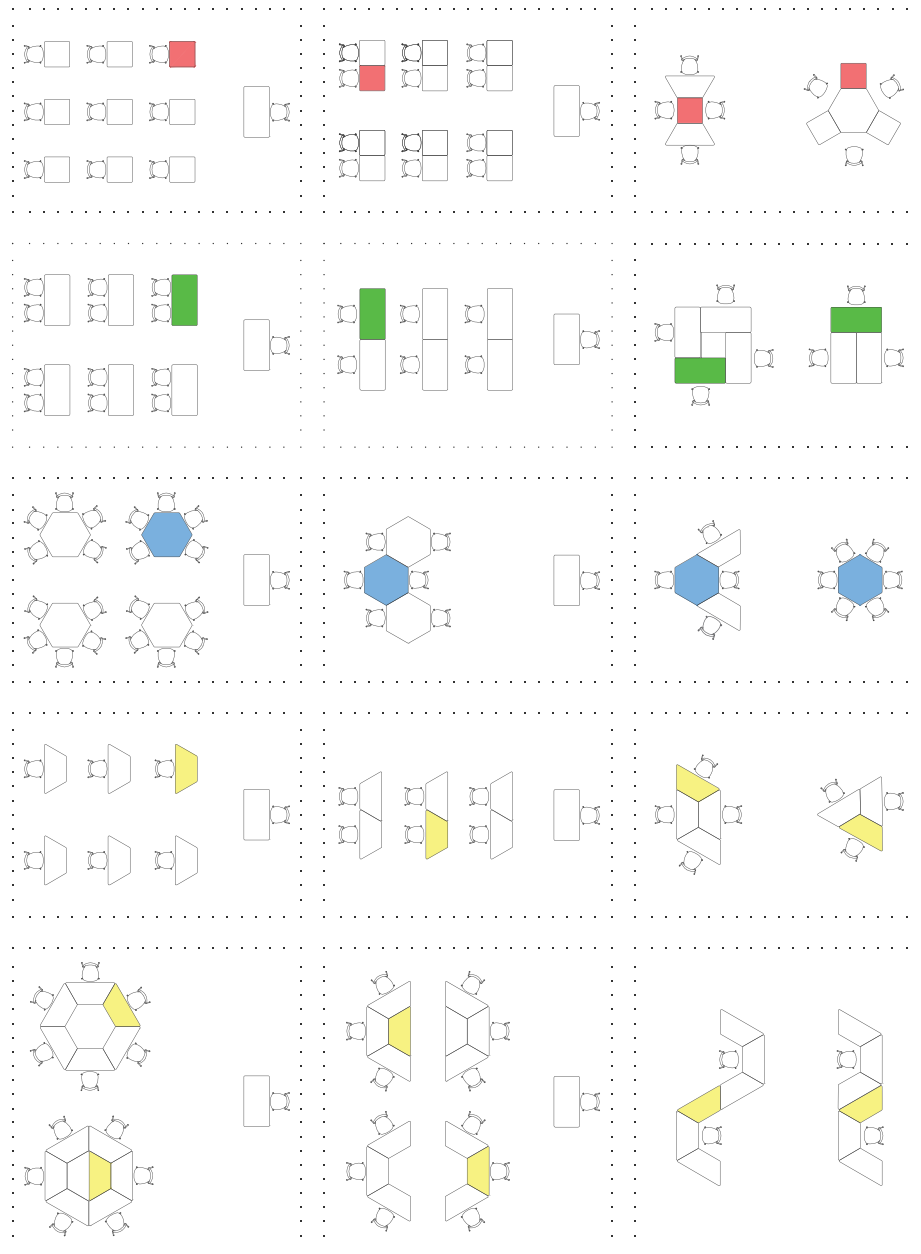
"Handy product family encourages team spirit by strengthening communication in experience-oriented next-generation offices with its hexagonal, trapezoidal, square and rectangular forms conducive to creating various combinations."

b.design team



103





Fishbone



"The Fishbone panel family has been developed to create private areas in workspaces. Its modular structure, which allows for countless combinations, can be added end-to-end in accordance with the area it will be used, providing flexible solutions. In open offices; it creates isolated workspaces that are free from distracting visual and audio problems and are suitable for focusing."

Özge Çağla Aktaş

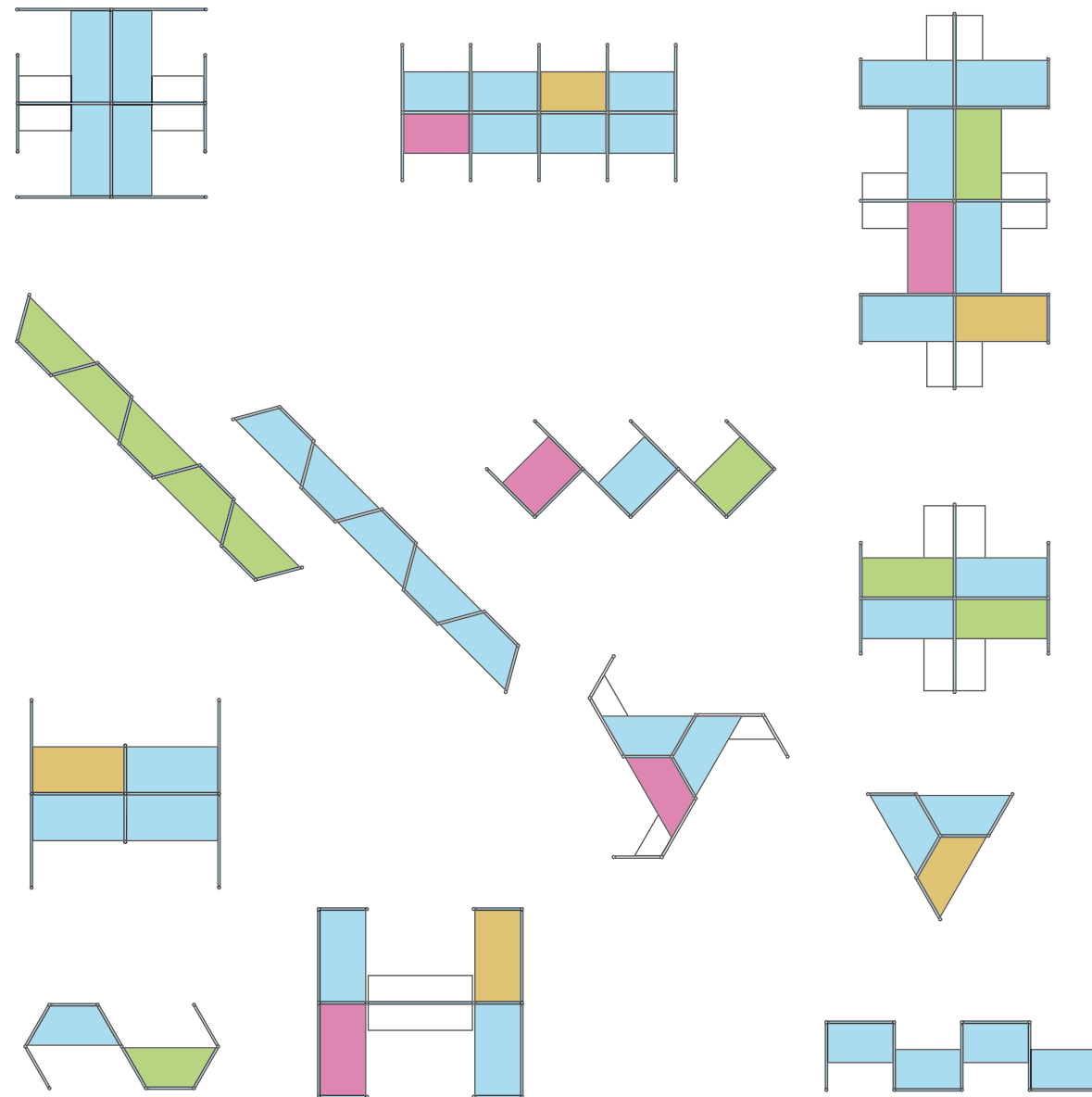
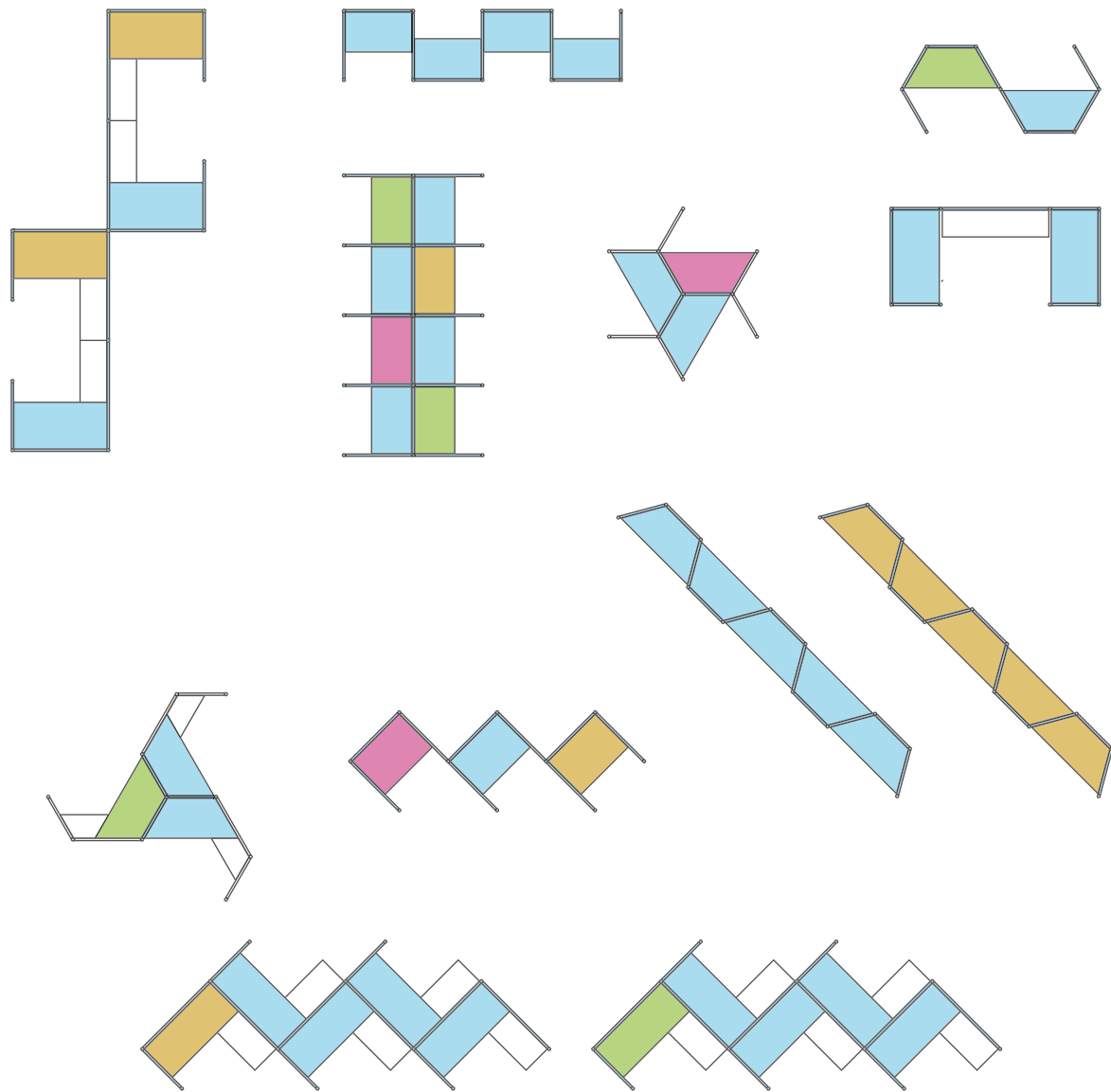


110



111







| Chairs



On Chair



Ronin



Foldit



Magnate



Bold



Leo



Cozy



Comfy



Word



Capo



Agent



Tone



Gusto



Poly



Point



Crab



Rare



Swan



Assist



Move



Revolution



Quick



Fast

On Chair

"On Chair, which looks like a reflection of the German design school, offers a remarkable visuality and a dynamic living experience. This seat, which stands out by its ability to stretch both the width of the field and all directions, allows the user to sit in different positions without any anatomical complications. With the ability to stretch and lock in one of three directions provided by Trimension technology, On Chair manager seat makes office life easier."



Ronin

120

"Ronin takes its name from "ro+nin" in Japanese that means "wave man" describing free wandering warriors unattached to any place or person. Executive chair, that originated from power of the Ronins who aimed to bring in change and renovation in management with their free spirit, inspires contemporary visionary and determined leaders who are open for improvement."

Utkan Kızıltuğ



121

Foldit

"Modern - classical style product family responds to different usage scenarios such as work, meeting, waiting, rest. The simple form, with elegant and careful details, creates a moving and calm structure. Combining classical and modern items, Foldit stands out with its sophisticated stance."

Özge Çağla Aktaş



Magnate

124



“The leather cover and quality metal legs carry the image of superiority and give its aowner an exceptional experience with every touch. The Magnate family with its functionality and esthetic quality appeals to the taste of top executives.”

Erhan Yaman - Muammer Erel - Cüneyt Ara

125



Word

"its modern-classical line, Word is designed for strong spaces with its own style such as meeting, waiting, resting areas and executive rooms. It adapts to different usage scenarios with its simple, organic and elegant form. In addition to its high-level stance, it is a candidate to be indispensable for both new generation workspaces and modern-classical offices with its amorphous form. Its body-supporting design, besides providing an ergonomic use, gives sense of confidence to the environment with its strong stance. While it adapts to current dynamic offices with its timeless line, it also refers to classical offices."

Bürotime Tasarım Ekibi



| Capo

128

"Capo chair has indisputable individuality with characteristic lines. Its unique style and alternative colors add refined and distinct look to the executive offices and meeting rooms."



129

| Agent

Designed with the harmonious combination of natural leather and metal, Agent brings together performance and a strong stance for executives working in a demanding business environment.

Featuring 7-level height adjustment, 8-level depth adjustment, and 4D armrests with forward-backward movement capability, Agent adapts to the user's body structure and working position. The single-button on the armrest allows for easy adjustment of height and back stiffness without disrupting your posture, while the 5-level lumbar support height and seat depth adjustment reduce stress and pressure on the spine.



Tone

132

"Tone; redefines comfort with elegant lines and next generation design technology in different areas of use. While bringing a stylish look to offices thanks to a simple design language and modern lines, it also orients its users towards a correct sitting position with the synchronous mechanism technology it offers for the back, as well as the soft sitting surface."



133

Rare

134

"Rare is a distinct chair with recognizable frame design. The shape changes according to the physical characteristics of its user and guides to correct sitting position. Ergonomic design features mesh back, soft seat and adjustable armrests."



135

| Swan

136

"Swan is an office chair composed of different parts; hard frame and soft, inviting padding. The height of the chair is adjustable to your preference, providing the comfort lasting through the day."



137

Assist

138

"Comfort becomes the most important quality for those who spend long hours at their desks. Assist supports your back and its seat is adjustable which makes it your favorite chair."



139

Move

"MOVE stands out as an essential piece of furniture for contemporary offices. With its ergonomic design, mesh upholstery within a plastic back frame and flexible back structure, MOVE provides users with top-level comfort. Integrating modern aesthetics, its durable plastic frame and lightweight mesh upholstery combine elegance and comfort, making it a symbol of freedom and movement in workspaces.

With our innovative design philosophy and high-quality production, MOVE allows you to make your offices more functional and aesthetically pleasing."

Utkan Kızıltuğ



Bold

142

"The Bold office chair offers high performance with ergonomic features in intense work environments. Its depth-adjustable spacious seat cushion and adjustable armrests provide a comfortable seating experience. The Easy Synchron mechanism supports the spine by locking the backrest at 23° and the forward tilt at 10° in 5 points. The adjustable neck support enhances personal comfort. The breathable mesh backrest and adjustable lumbar support provide ideal support for prolonged use. Bold becomes the ideal office chair for busy workdays."

b.design team



143

Leo

144

"Inspired by the graceful and flexible movements of ballerinas, Leo stands out with its specially crafted breathable, durable mesh structure. Its monobloc body, with the back and seat made of mesh, supports the natural curve of the spine, applying equal pressure to the user's body and distributing the load evenly. With its modern and stylish design, Leo adds an elegant touch to workspaces, meeting rooms, and home office environments."

b.design team



145

Cozy

146

"Cozy emphasizes on functionality with adjustable arms, head and back support, sync mechanism and coat hanger. It offers comfort and elegant atmosphere in the offices with colorful back alternatives."



147

| Comfy

148

"Comfy; It has an eye-free form made of thin, simple lines. This seat family offers a comfortable use with adjustable seating height and mesh back support; It consists of executive, operational and waiting seats."

b.design team



149

Gusto

150



“The world is changing fastly. Due to technological developments, cultural changes, new business lines and health problems; our working conditions, habits and places can change from day to day. As houses turn into offices, offices become work spaces in the comfort of home. Armchairs and tables are still indispensable furniture of offices. The Gusto multi-purpose office chair product family offers a wide range of uses with different leg types as well as upholstery and color options. It promises a comfortable and ergonomic sitting with its sharp and stable lines. Gusto armchairs offer a variety of solutions to adapt to any workspace with other furniture. ”

Duygu Aslanel



151

Poly

152



Poly is a multi-purpose product family that can be easily used in meeting, waiting and similar areas as well as in home-offices, cafes and restaurants with its organic form and simple line in new generation offices, where concepts such as dynamism, movement and speed are the basis. Thanks to its minimal lines and ergonomic design, it occupies an ideal space in narrow spaces and also offers a comfortable sitting experience. With its different feet forms, colors and materials, it meets the needs of the user and the different concepts of the spaces.

b.design team

153



| Point

154

"Point product family which is developed to meet the different needs and expectations of the employees in a working day, provides comfortable sitting experience with upholstery alternatives."

b.design team



155

Crab

156

"Crab has a multi-functional design featuring forward-backward moving arms, attachable writing tablets and stationary accessories. Models with castors offer freedom of movement and fixed-leg models are to provide positioning with the order. Chairs can be arranged in straight rows with connection apparatus. The Crab family is a perfect choice for trainings, meetings, seminars and waiting areas."



157

Revolution

158

"Revolution accommodates 180 degrees rotating seat, plastic or aluminum arm options, detachable writing table; with this features it becomes most suitable chair for any place and every purpose."

Jeremiah Ferrarese - Paolo Scagnellato



159

Quick

160

"Quick, which carefully balances the ease of use and aesthetics of polypropylene material, brings vitality to spaces with its eye-catching colors. The monoblock Shell, combined with different chair base forms, enables flexible and wide usage area."

Jeremiah Ferrarese - Paolo Scagnellato



161

Fast

162

"Fast, emerged from the idea of achieving the best result with the simplest form, seamlessly blending the elegance of simplicity with comfort. The product, characterized by simplified, minimal lines, is designed with a unified color scheme across all its components (monobloc body, armrest, and base) to ensure color coherence. With options such as a mobile work chair, a chrome sled-based chair, and a bar stool, it offers a wide range of uses. From education, meetings, office, café-restaurant, social spaces to home office work areas, Fast is adaptable to various purposes and provides ease of storage with its stacking feature."



163



Armchairs & Sofas



Boss



Neva



Stay



Dem



Throne



Throne Wave



Diamond



Gilda



Rast



Nest



Bliss



Onyx



Hills



Keops



Piet



Fusion



Foça

Boss

168



“The design of boss reflects a new concept of balance and determination.

Professionals ascending in their careers in the business world achieve a lot through their determination and skill to keep various works in balance. Same qualities are also important in their image too, the motivation behind the design is to reflect these features.”

Utkan Kızıltuğ - Duygu Aslanel

169



Neva

170



“As little design as possible.

For me good design means minimal design. There was a single idea behind Neva's design, I wanted to make “a sofa”. I aimed to come up with image that would not wear off its novelty in time, keeping its charm constant and lasting. While drawing the first sketches, I always kept in mind that I was designing ‘a practical sofa’. These thoughts delivered authentic, plain and simple lines of Neva.”

Ender Yolcu

171



Stay

“Stay: a sofa for different, innovative and dynamic spaces.

The armchair of distinct and innovative spaces, Stay brings a sporty and dynamic atmosphere to your offices with soft mattress and cushions placed over a solid wood body. With a sense of design that does not compromise comfort, it creates the sense of power and prestige expected from an executive's office.”

Duygu Aslanel - Utkan Kızıltuğ



Diamond

174



"The new definition of comfort.

When we were designing the Diamond seating series, our main goal was to create a product that would relate to its users and give them a sense of ownership. In line with concept we wanted this product to reflect 'precise balance and power', the attributes of the top ranking position."

Özge Çağla Aktaş - Arif Akıllılar

175



Gilda

"A sofa for team work and cozy environments.

We were designing Gilda with notion to make a different product and it led us to the idea to minimize the massive look of straight lines. We developed the image further with soft cushions and curved lines."

Ece Yalim - Oğuz Yalim



Rast

**"Modern appeal
meets the classical lines.**

I wanted to create a product that would offer a top-level comfort, so I designed a generous seating part with comfy back support cushions. Rast is a perfect sofa for those who cannot imagine modern and innovative office without classic beauty."

Ender Yolcu



Hills

180



“Less is more.

Now we need a pure and simple environment more than ever. Purely rational spirit of Hills designed with the minimalist philosophy of “less is more” (Mies Van Der Rohe) changes our environment and our perception of design.”

Paratoner Design

181



Keops

182



“Prestige of pyramids in your office.

Keops Pyramid, one of the Seven Wonders of the World inspired this series. Architecture of Pyramid tapering towards the sky became the main element of our design.”

Arif Akıllılar - Özge Çağla Aktaş



183

Piet

"A chair with eclectic design to suit every office."

Piet sofa designed with spirit of handmade piece, to be different from ordinary items of mass production. This aspect of design highlighted by fine craftsmanship and handpicked quality material. We envisioned Piet to be a rarity chair in the furniture collection of executive office."

Ece Yalım - Oğuz Yalım



Dem

“An attractive, unpretentious, ‘mature’ sofa.

The source of inspiration for Dem is the popular rush chairs of Anatolia. I applied the narrowing ‘V’ shape of the seat to Dem as a seat cushion. I wanted to design a product that combines a familiar, local object of this land with the needs of the modern world.

Dem has a pure design, no extras. It has just the right combination, no more, no less, a fine ‘maturity’. It is a chair with an authentic form, and plain and solution oriented function.”

Cüneyt Ara



Throne

“Imagine a corner in the office that belongs only to you.”

As the workspaces turn into more collective and open structures, the need for employees to get away from the intense schedule of offices increases significantly. Acknowledging this differentiation in offices and work culture, we designed Throne, which reveals in a gentle way the privacy and comfort that is most needed in the flutter of an office.”

Duygu Aslanel - Utkan Kızıltuğ



Throne Wave

190



“Imagine a corner in the office that belongs only to you.

As the workplaces turn into more collective and open spaces, employees need private spaces where they can get away from the busy office life to think and relax. Throne Wave, which we designed considering this differentiation in offices and working culture, in addition to its 360 degree rotating feature, it also has the characteristic of a swivel rocker lounge chair with its special design mechanism. The most striking difference from classic swivel rocker lounge chairs or armchairs, it can be swung in any direction. Throne Wave which is a waiting chair that can easily adapt to your office or home with different material and color options, it is a stylish and decorative product that you can sit and enjoy for a long time on...”

Duygu Aslanel - Utkan Kızıltuğ



191

Nest

“Created for contemporay offices: a natural look and comfortable structure.

Furniture is part of our lives and it forms our living environment. Comparable to the living organisms, the pieces of the furniture are esthetically adapting to their habitat. Nest is designed with this idea in mind and carries authentic aesthetics in every detail we see and feel. Organic structure of the product offers a great comfort to your body.”

Paratoner Design



Bliss

194



“The perfect & lively complementary of your office.

Bliss is designed as a seating unit to bring comfort to the common areas of an office. Its geometric form builds a pure and modest language while maximizing comfort with soft and curvy inner surface. Detailed with the awareness of the significance of aesthetic in every sense, Bliss is the essential complement of the modern, young and dynamic offices.”

Özge Çağla Aktaş - Duygu Aslanlı

195



| Onyx

196



"Like a piece from nature."

We designed Onyx by using only simple contours. Thanks to the natural materials that are used like leather and felt, Onyx gives the user a sense of nature, and this way it breaks the boring atmosphere that permeated to an office environment, turning it into a place where employees are happier."

Paratoner Design



197

Fusion

198



“Action and tranquility.

Made with the first class materials Fusion is a chair unlike any other; it is elite, aesthetic and unusual. This piece unites tranquility with contrasting dynamism of unique details, it brings new and different aesthetics. The soft touch in the dynamic structure gives user balance and comfort.”

Cüneyt Ara

199



Foça

“Provides a comfortable seating.

Designed for a single seating, Foça creates a warm atmosphere in the environment it is used in, thanks to its wooden leg combination compatible with artificial leather, fabric and felt coating with a wide range of colors. It gives your guests the comfort they need, by considering the comfort from executive rooms to waiting areas.”

b.design team





| Waiting Area
Group &
Complementary



Beluga



Sam



Dem Saloon



Arte



Bug



Neat



Bliss



Keops Sofa



Hexa



Zoom



Norm



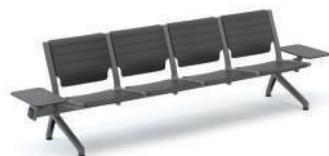
USB



Stack



Holm



Flat



Port



Pick



Pal



Octopus



Kokteyl



Bamboo



Nar



Zoom Stool



Quick Stool



Fast Stool



Flower



Zoom Hanger



Focus

Beluga



206

“Creates original and aesthetic spaces with its innovative style.

Beluga; defines the seating function of two individuals as space while providing its self-supporting with the arch forms created by the combination of many trusses' projections on the floor. The inward curves created by the arc forms, which settle on the floor, provide stability of Beluga and enable users to position their legs backward during the seating action. Its design allows it to be positioned in public spaces as well as in private areas. While creating a structure that will support the sitting function ergonomically, it creates a perception of a natural form with its organic appearance.”

Atilla Kuzu



207

Sam

“Past and future presented in a perfect craftsmanship.

We designed Sam as the reflection of refined taste. The look of Sam reminds us of 1950s, but its functional details and clear lines belong to the modern world. It creates a balance between the past and the present and delivers a very different atmosphere to the waiting areas.”

Ece Yalın - Oğuz Yalın



Dem Saloon

“Small details make big difference.

Dem’s unique “V” design is kept in Dem Saloon, we used high quality wood to make it a prestigious product and it became a smart solution for those who plan an elite environment.”

Cüneyt Ara



Keops Sofa

212



“Keops, expression of comfort and prestige.

Keops takes its name and inspiration from one the Seven Wonders of the World, it is a glory and prestige of the Pyramid combined with comfort. This spectacular member of the seating series brings new dimension to the waiting areas of the prestige offices.”

Arif Akıllılar - Özge Çağla Aktaş



213

Hexa

“Simple geometry and modular flexibility.

We see that waiting group furnitures which are mostly used in corporation’s reception and public areas, began to be used in the open offices as well.

When we begin to design Hexa, we wanted it to have a wide usage areas, appeals multi users and fully meets all needs. Owing to its modular structure it easily fits to different areas with different combinations. Hexa is a product which responds the needs of its user and the environment.”

Fatih Aslantaş



Zoom

216

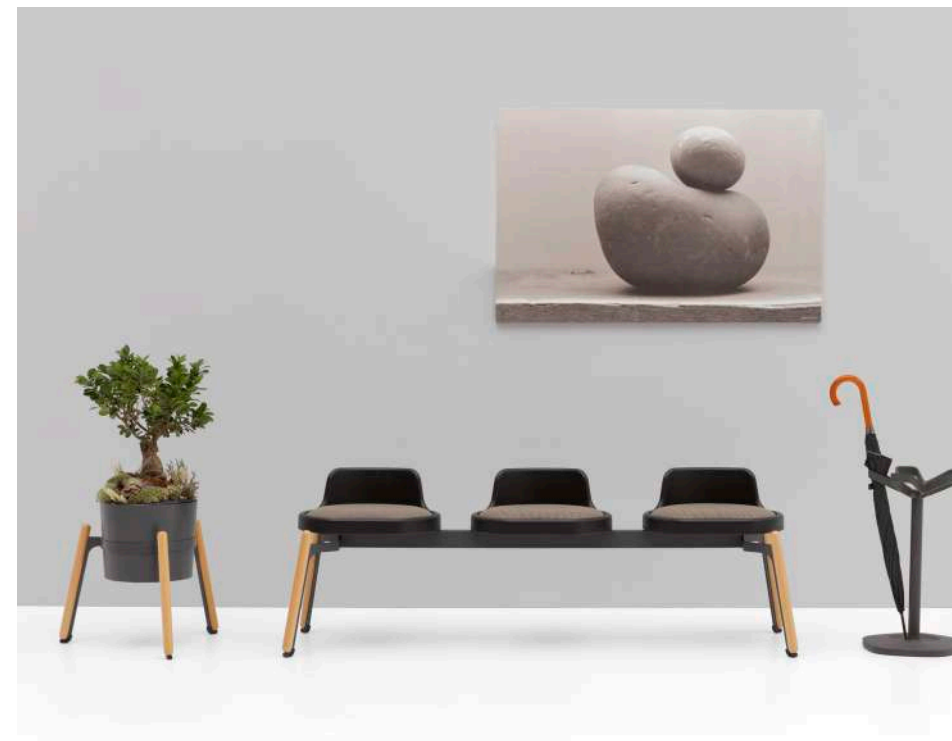


"A favorite of the high circulation areas."

We imagined that Zoom would have a fast interaction with users in waiting areas. The basic form is pretty familiar, we designed it as a chain of stools. Zoom designed without a back panel, this feature makes it easy for users to communicate with each other."

Artful Design

217



Flat

“Waiting areas turn into a comfort center.

Flat airport bench is a comfort center that meets today’s needs. Meeting all user needs, Flat is designed for all public areas where waiting moments are important. The product, which has a suitable structure for the dynamics of architectural spaces with its strong construction and geometry, stands out with its hidden assembly details, elegance and sophisticated style. While different seat arrays offer numerous configuration alternatives in the space, they also provide the opportunity to add to existing products. The surface discharges in the backrest and seat fonts, which perfectly connected to each other, provide a flexible structure that increases comfort. The easy assembly structure that provides the advantage of on-site service creates continuity of use with parts replacement without completely disassembling the product.”

Arman Tasarım





Port

222



“Every detail is covered for long term use.

Adding value to wherever it is with its strong structure, and firm and sharp lines, Port is becoming a favorite for waiting areas with its skin plate cushions, and connection apparatus that have the characteristics of a coffee table...”

Süha Süzen - Arif Akıllılar



223

Pick

224



“Energetic and exciting.

Pick is a complementary unit of waiting areas and modern offices with its modular structure, alternative color and material options. The waiting area is the first place where the companies shared its character with the guests, therefore, Pick provides a pleasant waiting time for its users with its eye-catching and coherent structure. It also provides solutions in the office to create area for resting, relaxing and socializing individually or in groups.”

Ela Aldıkaçtı



225

Nar

226



“A must for dynamic offices.

Offering comfort and harmony together, Nar is bringing liveliness to offices. An essential for dynamic office environments with its circular form and rich color alternatives, Nar completes your workspaces with its cute and functional details.”

Cüneyt Ara



227

Zoom Stool

228

"A dynamic seating experience.

Zoom stool, which is the most important complementary element of high tables from new generation work areas to social areas such as cafes and restaurants, provides a dynamic sitting experience with a height-adjustable rotating seating surface. Chrome-plated metal bistro leg adds elegance to environment with artificial leather, fabric and felt upholstery options offering a wide range of color alternatives."

Artful Design



229

Quick Stool

230

“Elegant and comfortable.

Quick High Stool, which has a refined and modern design, draws attention as a colorful complement to the high tables in social areas such as cafes and restaurants as well as in the work spaces. Its monoblock body wraps around the body which is positioned on a chrome metal structure, combines the elegance of simplicity with comfort.”

Jeremiah Ferrarese - Paolo Scagnellato



231

Fast Stool

232

“Fast Stool, emerged from the idea of achieving the best result with the simplest form, seamlessly blending the elegance of simplicity with comfort.

From office, café-restaurant to social spaces, Fast Stool is adaptable to various purposes and provides ease of storage with its stacking feature.”



233

| Arte

234



“What is the coffee table?

Just a furniture complement or an accessory?

Or is it a fastener that fills the spaces among furnitures?

Or are they small attraction centers that bring people together...

Actually ARTE coffee table series are all of these.”

Fatih Aslantaş



235

Bug

236



“Fits to different office environments.

Bug has a wide range product family with seperate standout wooden legs and alternative table size options. Bug which creates a natural and warm atmosphere in the environment with solid wood foot detail and organic lines, has a design that can provide solution to different office environments with alternative color and material options.”

Fatih Aslantaş

237



Neat



“Simplicity and elegance together.

We designed Neat coffee table to be used together with sofa groups. The simple elegance of the Neat coffee table complements the modern look of the office. Neat embodies a strong impression combined with refined look. Smart legs design offers different solutions depending on the changing needs of the user. The rich range of the product family with plain and elegant style will satisfy all your needs in the office.”

Özge Çağla Aktaş - Duygu Aslanel



Bliss

240



“Complement of modern and dynamic work spaces.

Bliss coffee table series, distinguished with its modern and innovative style, was designed as a complement to the new generation of modern working spaces.”

Özge Çağla Aktaş - Duygu Aslanel



241

| Norm

242



"Norm coffee table, with its plain and refined geometric forms, is specially designed to be complementary to the executive furniture. Fully focused on functionality and simplicity. In addition to its simple design, it has an elegant and modern look with its natural wood veneer table and block lacquered legs. With these features, it will be in harmony with many furniture and spaces."

Fatih Aslantaş

243



| USB

244



245

246



247



Stack

"Stack brings a different and innovative breath to individual storage needs in line with the changing demands of the users in accordance with today's modern working culture. Designed to provide solutions for storage needs in working areas ranging from home office to executive offices, Stack; It creates stylish spaces with its perforated panel on the back surface, decorative sliding door option, elaborate round handle and foot details. Vertical metal pipes at the corners combine the legs at the bottom with the fittings at the top of the cabinet, thus creating a surrounding frame that provides visual integrity."

Fatih Aslantaş

248



249



| Holm

252



“A multipurpose cabinet family.

Holm offers infinite combination possibilities with cabinet, door, shelf and drawer details that are shaped according to different usage scenarios ranging from manager rooms to open areas in the office area.”

b.design team



253

254



255



Pal

"Blending aesthetics and functionality, Pal pedestal makes space on your desk by allowing you to position stationery on its top thanks to its specially designed plastic crown. With the sheet metal panel located on sides of the body with 5 different color alternatives, it offers a stylish storage solution in both office and home work environments."

b.design team





Octopus

260



"Nature is a treasure with endless resources for humanity. For centuries, humans have imitated the magnificence of nature in the field of science, art and design, seen it as a source of inspiration. As the name indicates, Octopus an original product that has been created by utilizing this source of inspiration. The design of its basic structure inspired by the octopus, it brings overlapping of its functionality with the general structure. With its formal structure that makes us feel the perfection of nature in our subconscious, it will become a distinctive and decorative product for our offices and living spaces at the same time."

Ozan Sinan Tığlıoğlu

261



Kokteyl

"Kokteyl Valet Stand and Hanger represent a product family consisting of two complementary products. The primary purpose of this family is to bring functionality and aesthetics together, enabling users to organize their daily lives in a more organized and stylish manner. Different angled bent metal pipe bending profile modules, offering a modern and minimalist appearance, come together to meet various needs.

Nurçin Özcan Akın



Bamboo

264

“Bamboo hangers which have simple design language, soft tone colors, and adjustable hooks create a visual distinction in single use while looks like a real bamboo fence in multiple use.”

Peter Van De Water



265

Flower

266



"Flower is bright answer to the small daily needs of the office. The range presented in wide selection of colors, available in anthracite, sand and orange, it has cast iron stand, steel pipe body and plastic injection hanger. It is a durable product with a minimal design."

Robert Bronwasser



267



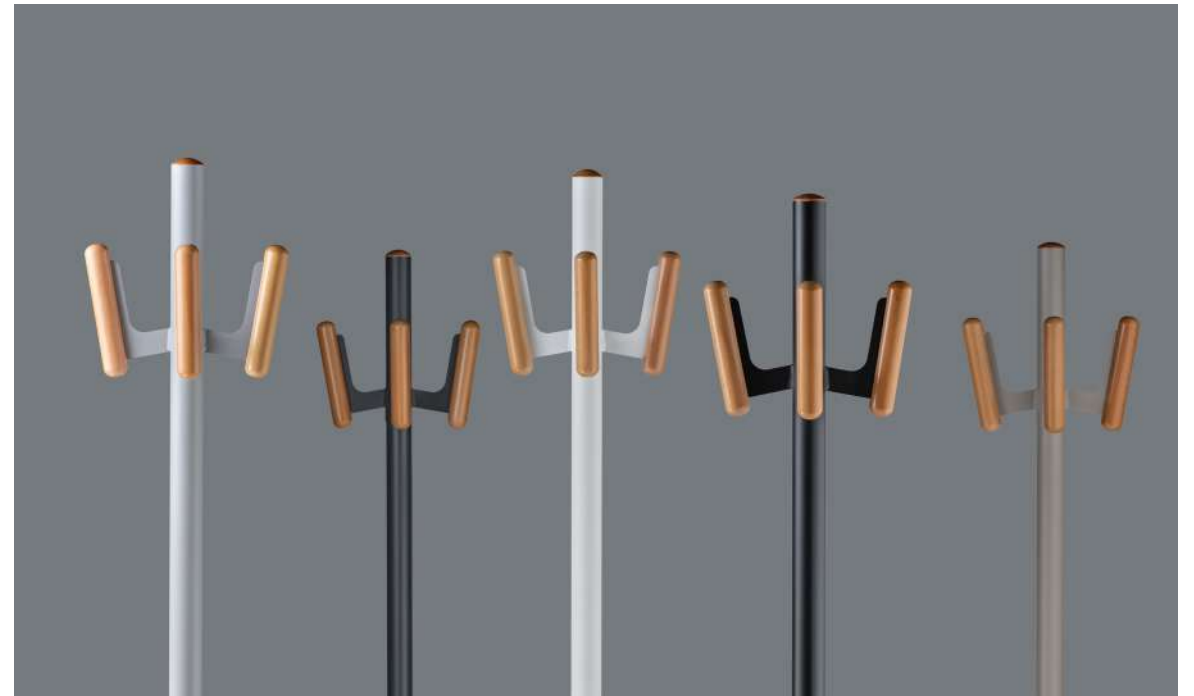
| Zoom Hanger

268



"Zoom hanger, which is the substantial complementary of modern offices, creates visual integrity with other furniture in its environment. While the thick-sectioned metal material increases its durability, the wooden solid bars surrounding them add an aesthetic look to the product."

Artful Design



269

Focus

“Creates flexible, functional and inspiring environments in working areas.

Noise may cause physical and psychological damage to human health. As the noise level increases, the stress level rises, focusing problem occurs. When it is exposed for a long time, blood pressure increases and many problems such as breathing problems occurs. Therefore noise is seen as a frequent problem in many offices, causes concentration problems and thus to decrease employee’s productivity. With Focus, it is aimed to create peaceful workspaces that are visually and aurally isolated in open office environments. With its modular structure, many different usage scenarios can be created such as for spontaneous meetings, a comfortable, quiet resting area, isolated work areas... Magazine holder, white board and hanger accessories satisfy overall user / employee needs.”

Özge Çağla Aktaş - Utkan Kızıltuğ





Home Office

Working dynamics changed due to flexible working hours have begun to convert the offices into homes, and the homes into offices. As the traffic and transportation issues have increasingly become the biggest challenges of the big cities, and the mobile devices and internet have become faster and proliferated in recent years, working from home has increased significantly. **Units that will boost up the concentration and effective working, and are designed to provide solutions to all the needs of the users in the working space are indispensable elements of the home office environment.**

Home office products should accommodate intelligently positioned units and storing spaces where the required materials are kept, and should be designed in a way to incite the motivation of work without going off the general atmosphere of the house.



Pi Home



T50



Era Home



Runner Home

Pi Home

276



"Pi Home, creates a warm atmosphere in the working environment with its elegant and timeless design language created by shaping solid wood in a pure and fluid form while at the same time carries functionality to the top with its table accessories."

Alize Çetintaş - Burak Küre



277





T50

280



"Today, where working and living spaces are intertwined, the table as a design element adds new representations and meanings to the spaces it is in. During this representation, work lighting and personal storage area, which are other auxiliary elements of the work area, also gain importance. The T50 is an integrated design proposition for work and living spaces. It creates a stylish, simple and customizable space for its user with its fine structure, wide area of use, lighting and special drawers in places with many different functions such as homes, offices, hotels, libraries and schools."

Levent Çirpıcı



281



Era Home

"Showcasing the unique harmony of technology and nature, Era Home offers a functional unity by blending the sense of warmth that it created through its wooden legs and specially designed modesty panel with the functionality it offers with its cable tray and grommet solutions. It enables creation of a flexible and customizable workspace by allowing special accessories with its portable drawer unit located on the table."

b.design team





Runner Home

288



"Emphasizing the inseparable unity of functionality with design and aesthetics, Runner Home is developed for users who would like to portray a strong stance in their workspaces. The felt modesty panel integrated to the table, lacquered shelf unit and metal box accessory offer warm and cosy atmosphere to the user while combining wood, metal and felt with a professional balance."

b.design team

289







Offering users environments that protect human health, and improve quality of life, with superior indoor air quality in accordance with the sustainability approach it employs in production, it became the **first office furniture manufacturer** in 2014 that was qualified to receive the **GREENGUARD Gold** certificate in Turkey. Bürotime is the first choice of organizations that require green building certificates like **LEED** and **BREEAM**, and it aims at expanding awareness on sustainability by focusing on efficient natural resources.

bürotime

www.burotime.com

Bürotime reserves the right to change the design and color of the products.
Printed colors may not match the actual colors of the products.

MARCH 2024